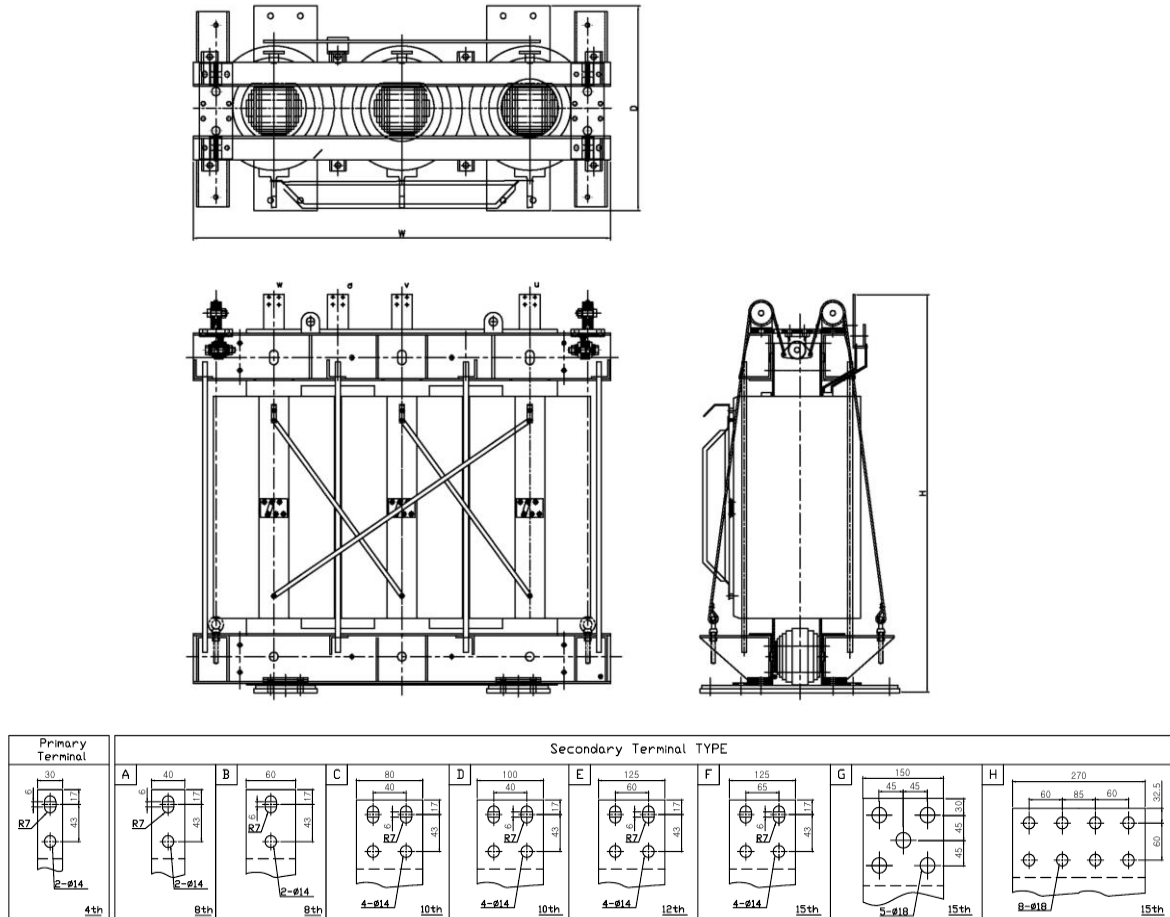


# SPECIFICATION [SAA-3S] [Earthquake-resistant Mold Transformer]



## 3P 22.9kV/380-220V

Capacity	Efficiency (Load Rate)		No load current	Voltage fluctuation rate	External dimensions(mm)			Weight	LV terminal	
(kVA)	50%	100%	(%)	(%)	W	D	H	(KG)	T * W	Type
100	98.90	98.6	3.0	1.3	1580	780	1175	1000	8t*40	A
200	99.00	98.7	1.5	1.2	1580	780	1360	1250	8t*40	A
300	99.10	98.8	1.0	1.2	1580	780	1360	1350	8t*40	A
400	99.20	98.9	1.0	1.2	1690	840	1420	1700	8t*60	B
500	99.20	98.9	1.0	1.1	1720	845	1410	2200	10t*80	C
600	99.30	99.1	1.0	1.0	1780	850	1470	2250	10t*80	C
750	99.30	99.1	1.0	1.0	1780	860	1570	2350	10t*100	D
1000	99.40	99.2	1.0	1.0	1870	880	1690	2900	12t*125	E
1250	99.40	99.2	1.0	1.0	1990	890	1705	3350	12t*125	E
1500	99.50	99.3	1.0	1.0	2060	1010	1845	3700	15t*150	G
2000	99.50	99.3	1.0	1.0	2250	1050	2075	4950	15t*150	G
2500	99.50	99.3	1.0	1.0	2420	1200	2150	6200	15t*270	H
3000	99.50	99.3	1.0	1.0	2460	1200	2360	7200	20t*270	H

\* The above excess capacity and unwritten SPEC. can also be manufactured by order.